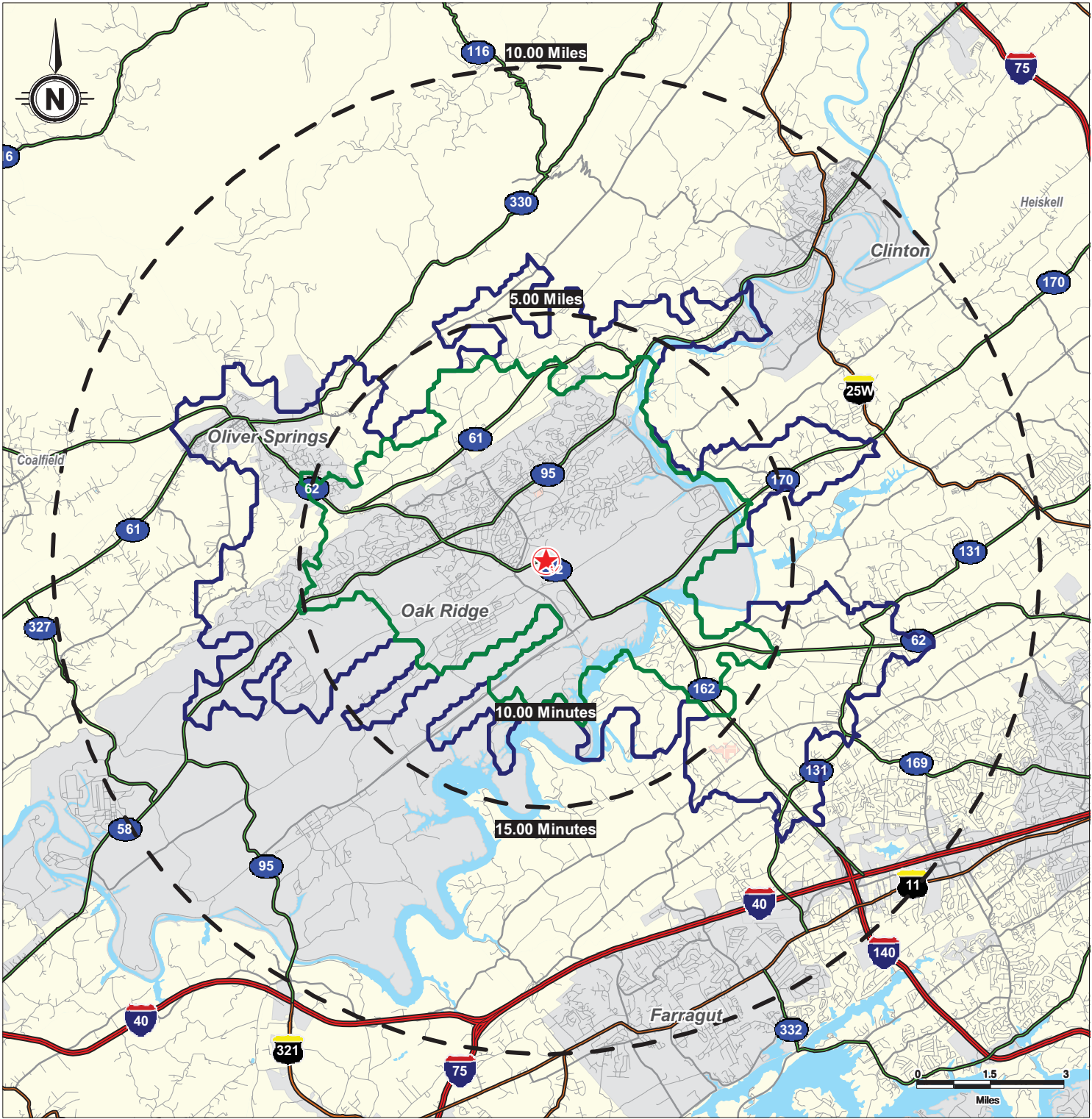


Lat: 36.004396 Lon: -84.232221 Zoom: 2.858 mi Logos are for identification purposes only and may be trademarks of their respective companies.



©2010, The Shopping Center Group, Nashville, TN (615) 259-0200. All Rights Reserved.



**Owner:**  
 Nathaniel Revis  
 702 South Illinois Ave  
 Oak Ridge, TN 37830  
 Phone: (865) 380-8000  
 Fax: (865) 980-2128

**For More Information:**  
 Parker Hardy, President/CEO  
 Oak Ridge Chamber of Commerce  
 1400 Oak Ridge Turnpike  
 Oak Ridge, TN 37830  
 (865) 483-1321  
 hardy@orcc.org | www.orcc.org

**The Summit**  
**S. Illinois Avenue at Centrifuge Way**  
**Oak Ridge, Tennessee**

**Parcels**

001106G A 00400	001106G A 00205	001106G A 00206
001106G A 00223	001106G A 00222	001106G A 00210
001106G A 00100	001106G A 00207	001106G A 00200
001106G A 00201	001106G A 00209	001106G A 00224
001106G A 00203	001106G A 00208	001106G A 00220
001106G A 00204	001106G A 00221	

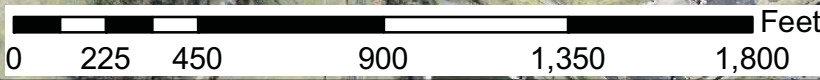
Prepared For  
 **OAK RIDGE**  
 Chamber of Commerce  
  
 City of **Oak Ridge**  
 Achieving Excellence

This map was produced using data from private and government sources deemed to be reliable. The information herein is provided without representation or warranty.

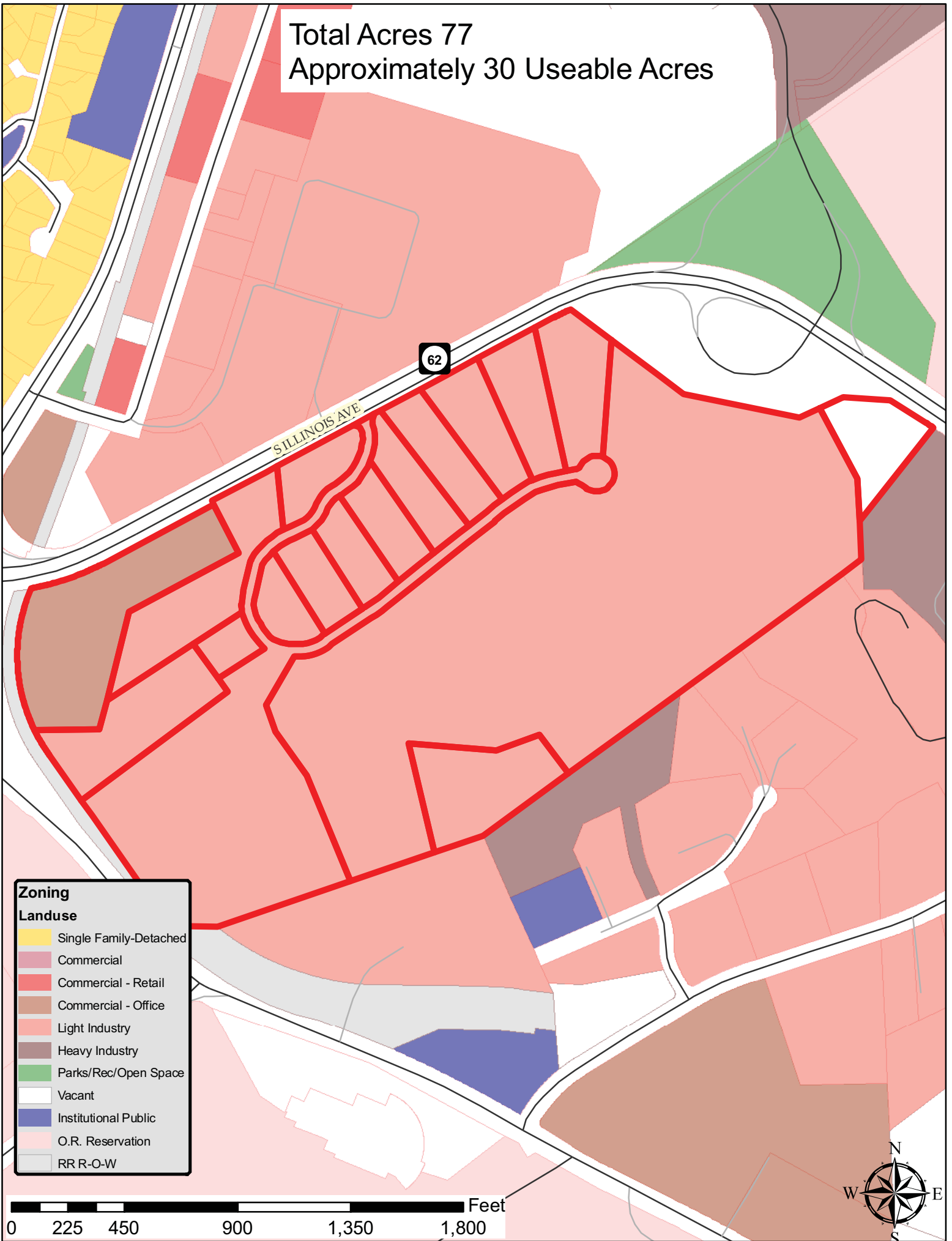
Total Acres 77  
Approximately 30 Useable Acres

SILLINOIS AVE

62

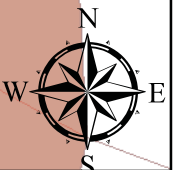


Total Acres 77  
Approximately 30 Useable Acres



Zoning	
Landuse	
[Yellow]	Single Family-Detached
[Pink]	Commercial
[Red]	Commercial - Retail
[Brown]	Commercial - Office
[Light Red]	Light Industry
[Dark Brown]	Heavy Industry
[Green]	Parks/Rec/Open Space
[White]	Vacant
[Blue]	Institutional Public
[Light Pink]	O.R. Reservation
[Grey]	RR R-O-W

0 225 450 900 1,350 1,800 Feet



# SUMMARY DEMOGRAPHIC PROFILE

1990 - 2000 Census, 2010 Estimates & 2015 Projections - as of 1st Qtr / 10

Calculated using Proportional Blocks



Lat/Lon: 36.0044/-84.23222

2010

<b>S. Illinois Avenue at Centrifuge Way Oak Ridge, Tennessee</b>		<b>5.00 mi radius</b>	<b>10.00 mi radius</b>	<b>10.00 min drivetime</b>	<b>15.00 min drivetime</b>
<b>POPULATION</b>	2010 Estimated Population	35,807	137,614	30,004	51,135
	2015 Projected Population	37,082	145,402	30,894	53,692
	2000 Census Population	32,551	118,924	27,534	45,588
	1990 Census Population	31,613	102,633	27,242	42,479
	Historical Annual Growth 1990 to 2010	0.7%	1.7%	0.5%	1.0%
	Projected Annual Growth 2010 to 2015	0.7%	1.1%	0.6%	1.0%
	2010 Male Population	47.5%	48.4%	47.2%	47.8%
	2010 Female Population	52.5%	51.6%	52.8%	52.2%
	2010 Average Age	41.9	40.4	42.0	41.4
	2010 Median Age	38.6	37.4	38.6	38.2
<b>HOUSEHOLDS</b>	2010 Estimated Households	15,473	55,856	13,247	21,682
	2015 Projected Households	16,009	58,925	13,637	22,727
	2000 Census Households	14,065	48,417	12,119	19,353
	1990 Census Households	13,500	40,492	11,846	17,687
	Historical Annual Growth 1990 to 2010	0.7%	1.9%	0.6%	1.1%
Projected Annual Growth 2010 to 2015	0.7%	1.1%	0.6%	1.0%	
<b>POPULATION BY RACE</b>	2010 Estimated White	88.3%	92.0%	86.9%	90.0%
	2010 Estimated Black or African American	7.3%	4.3%	8.2%	6.1%
	2010 Estimated Asian	2.3%	2.1%	2.5%	2.0%
	2010 Estimated Other Races	2.2%	1.7%	2.3%	1.9%
	2010 Estimated Hispanic	2.8%	2.5%	3.0%	2.5%
<b>INCOME</b>	2010 Estimated Average Household Income	\$ 62,013	\$ 70,889	\$ 61,550	\$ 65,041
	2010 Estimated Median Household Income	\$ 51,497	\$ 59,689	\$ 50,866	\$ 54,391
	2010 Estimated Per Capita Income	\$ 27,076	\$ 28,626	\$ 27,319	\$ 27,592
<b>EDUCATION (AGE 25+)</b>	2010 Elementary	5.4%	5.2%	5.1%	5.7%
	2010 Some High School	8.9%	8.3%	8.6%	8.8%
	2010 High School Graduate	27.5%	26.7%	26.7%	27.4%
	2010 Some College	21.1%	21.2%	21.5%	21.0%
	2010 College Degree	37.1%	38.6%	38.2%	37.1%
<b>BUSINESS</b>	Number of Businesses	1,053	4,590	1,012	1,356
	Total Number of Employees	27,359	86,435	26,587	32,071
	Avg Employee Population per Business	26.0	18.8	26.3	23.6
	Avg Residential Population per Business	34.0	30.0	29.7	37.7

This report was produced using data from private and government sources deemed to be reliable. The information herein is provided without representation or warranty.